

PAXSON

Option E.2 - Expand

- Expand school to 24 classrooms
- Remodel entry
- Acoustical "Barn Doors" between lunch room and gym
- Acoustical treatment of gym
- Reconfigure Hastings and Evans streets as "Parking Streets"

Paxson  
Elementary School  
Site Area: 2.12 acres  
Parking Spaces: None

Building Square Footage

Existing	52,049
New	4,500

Total Project Cost  
\$2,184,718

Replacement Cost  
\$12,700,000

Ratio 17%

Good  
Fair  
Poor  
Replace

Remaining Deferred  
Maintenance & Energy  
Project Costs  
\$0

Current Annual Energy  
Costs  
\$0

Potential Energy Savings  
\$0

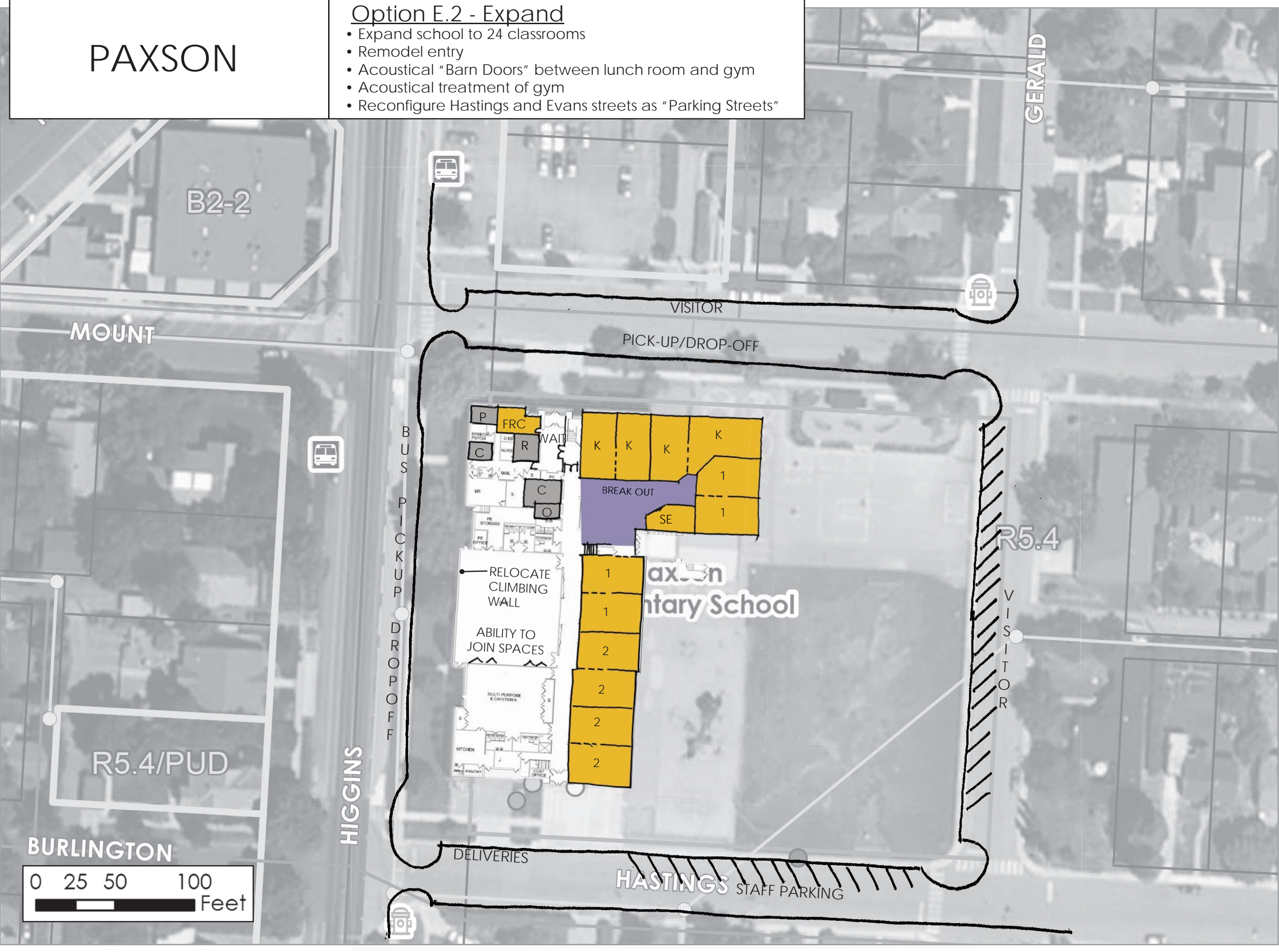
Rental/Lease/Sale Income  
None

Current Enrollment 393  
Future Peak Enrollment 490

Capacity 450-500  
Accessible Capacity  
450-500

Accessible/Permanent  
Capacity 450-500

Costs include construction, demolition (where applicable),  
technology, furnishings, site development, design fees,  
site acquisition (where applicable), contingency and  
escalation to January 2017

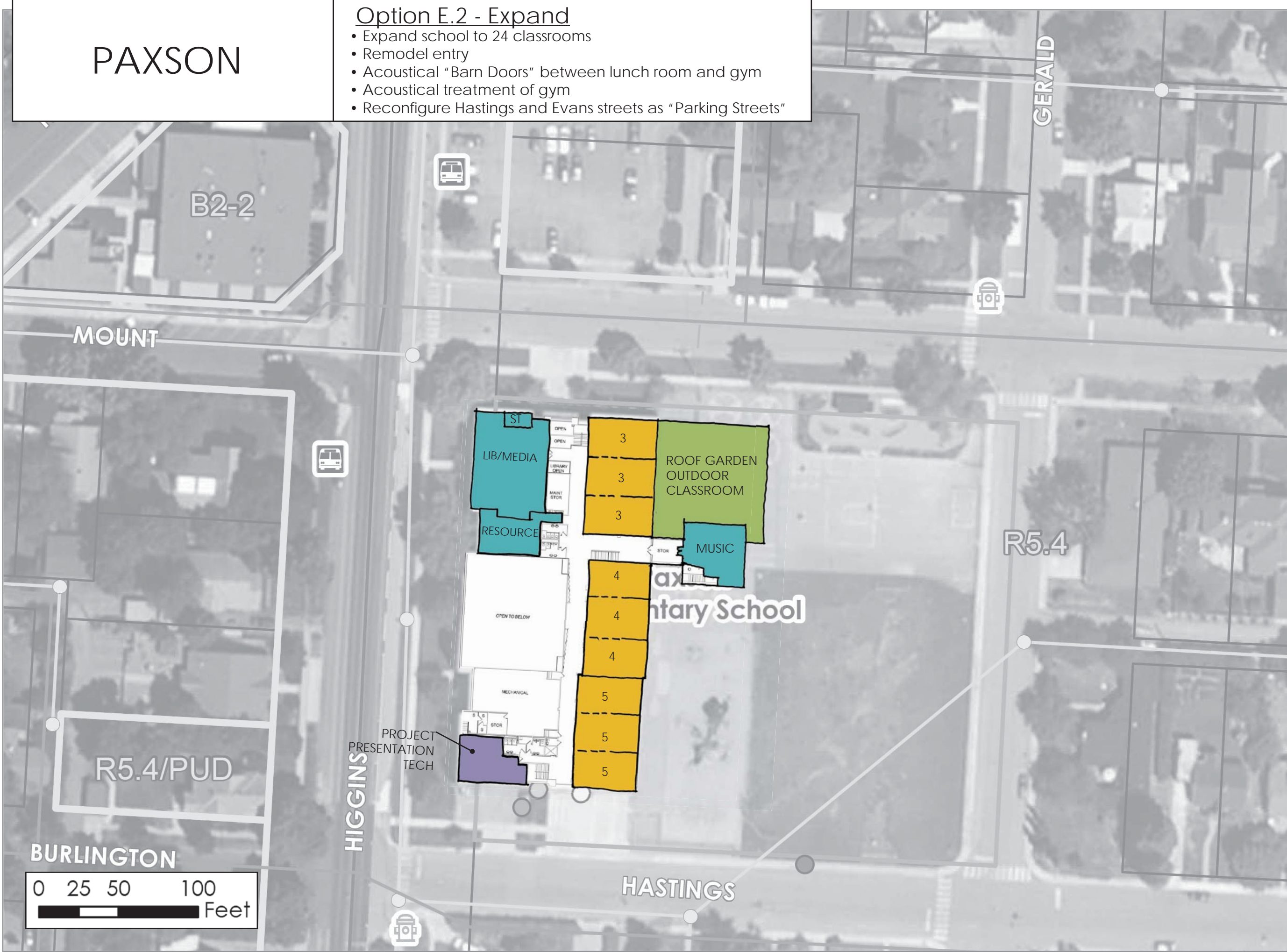




# PAXSON

## Option E.2 - Expand

- Expand school to 24 classrooms
- Remodel entry
- Acoustical “Barn Doors” between lunch room and gym
- Acoustical treatment of gym
- Reconfigure Hastings and Evans streets as “Parking Streets”



Paxson  
Elementary School  
Site Area: 2.12 acres  
Parking Spaces: None

Building Square Footage	
Existing	52,049
New	4,500

Total Project Cost  
\$2,184,718

Replacement Cost  
\$12,700,000

Ratio	17%
Good	
Fair	
Poor	
Replace	

Remaining Deferred  
Maintenance & Energy  
Project Costs  
\$0

Current Annual Energy  
Costs  
\$0

Potential Energy Savings  
\$0

Rental/Lease/Sale Income  
None

Current Enrollment 393  
Future Peak Enrollment 490

Capacity 450-500  
Accessible Capacity 450-500

Accessible/Permanent  
Capacity 450-500

Costs include construction, demolition (where applicable), technology, furnishings, site development, design fees, site acquisition (where applicable), contingency and escalation to January 2017